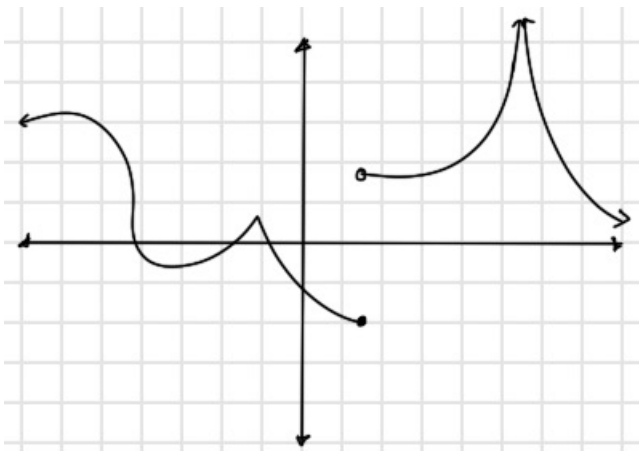
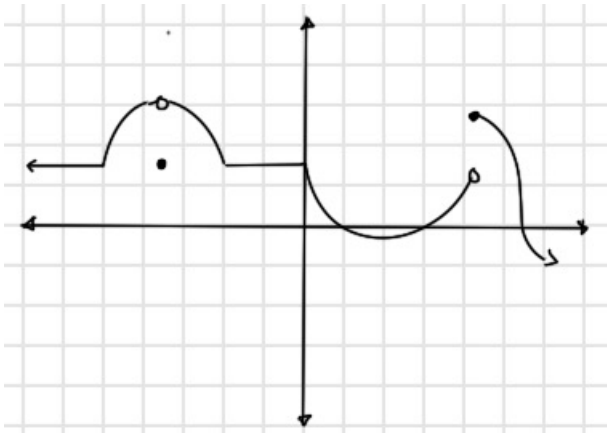


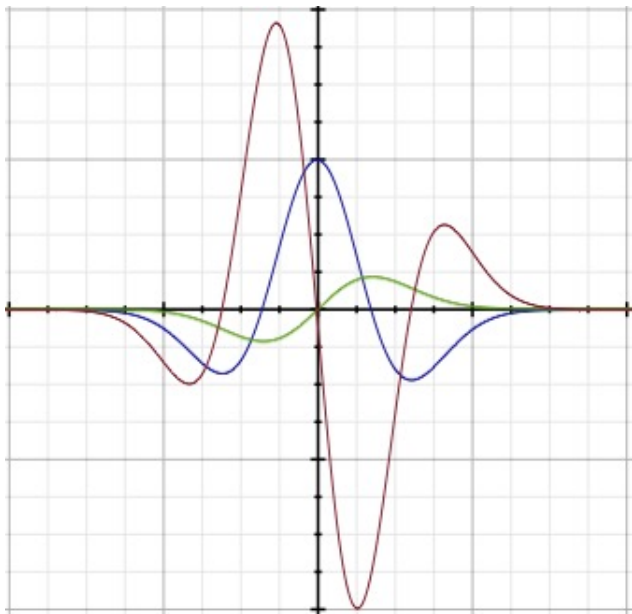
1. Find the derivative of  $f(x) = 7x - 3$  using the definition of the derivative.
2. Find the derivative of  $f(x) = 3x^2 + 2x$  using the definition of the derivative.
3. Find the derivative of  $f(x) = \frac{x^2 + 1}{x - 1}$  using the definition of the derivative.
4. Find the derivative of  $f(x) = \sqrt{3 - x}$  using the definition of the derivative.
5. Given  $f(x) = |3x - 6|$ , find  $f'$  and state its domain.
6. The graph of  $f$  is given. State, with reasons, where  $f$  is not differentiable.



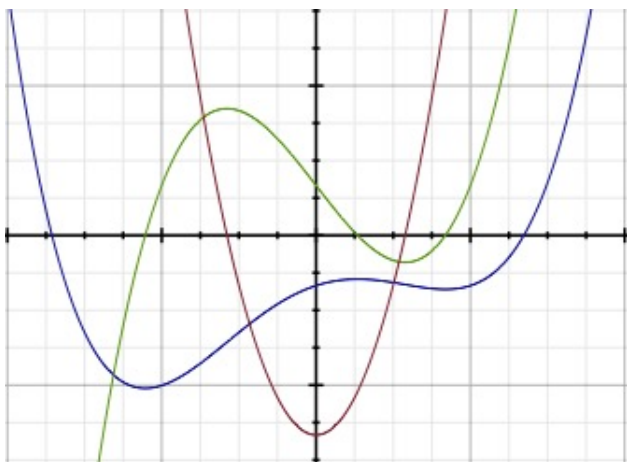
7. The graph of  $f$  is given. State, with reasons, where  $f$  is not differentiable.



8. The figure below shows the graphs of  $f$ ,  $f'$ , and  $f''$ , Identify each, and explain your reasoning.



9. The figure below shows the graphs of  $f$ ,  $f'$ , and  $f''$ , Identify each, and explain your reasoning.



10. The figure below shows the graphs of  $f$ ,  $f'$ ,  $f''$  and  $f'''$ , Identify each, and explain your reasoning.

